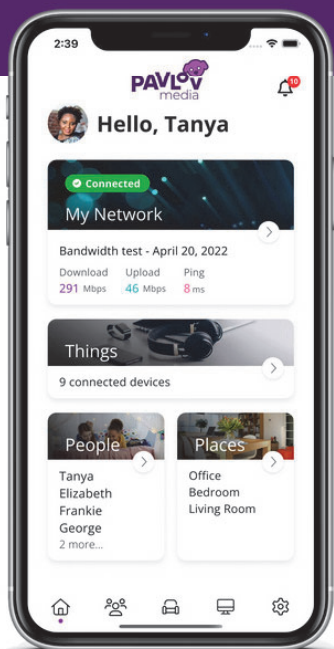
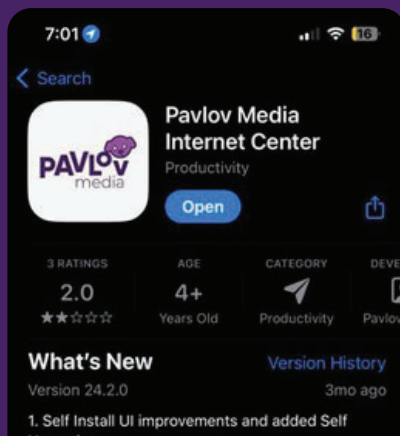


Getting Started with the Pavlov Media Internet Center App



Get the ultimate Wi-Fi experience with the Pavlov Media Mobile Center App.

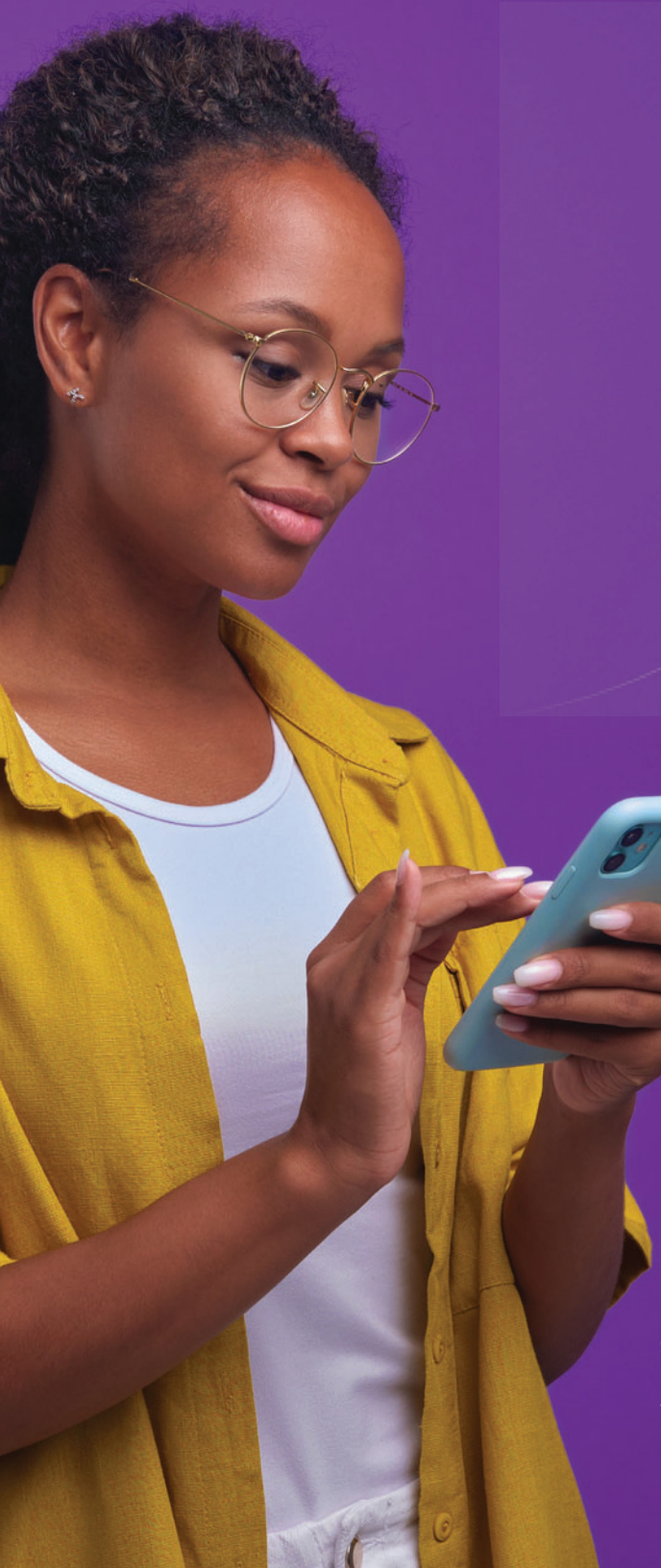
The app allows you to easily manage your Wi-Fi network within minutes. You can set up a guest network, change your password, run a speed test, and set basic parental controls.



First,

download the app to set up your router's Wi-Fi name and password.





6:54 signal strength Wi-Fi battery


Pavlov Media Internet Center


Sign Up

First Name

Last Name

Email

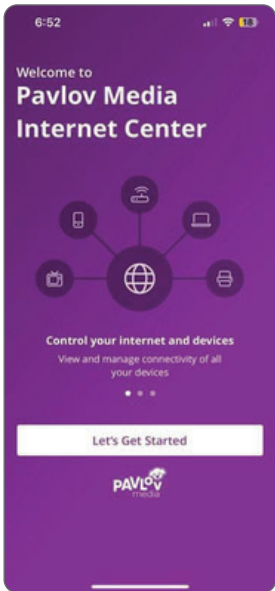
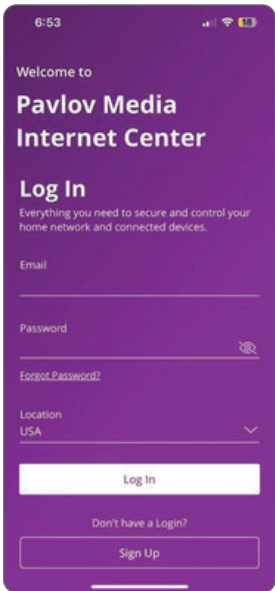
Password 

Location ⓘ
USA 

☐ I accept the [terms & conditions](#) & [privacy policy](#).

1. Sign up to your account. The password you enter here will be the password you use to login to the app.

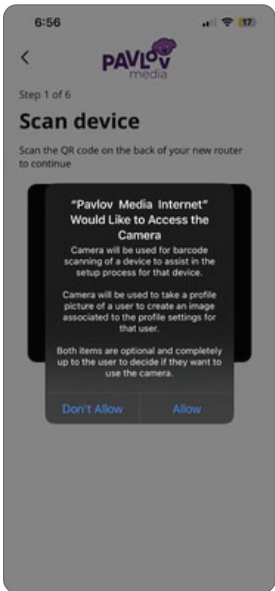
2. Log in to the app and select “Let’s get started”.



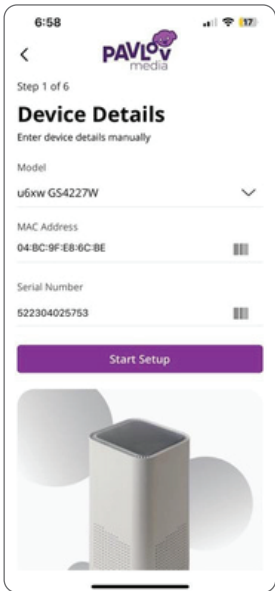
3. Follow the next steps for new router set up by selecting “My Router is Already Set Up”



4. Allow the “Pavlov Media Internet” to access your camera. You will need it to scan the barcode on the back of your device.



If the scanning feature is unavailable or does not work, you can manually enter the device details by filling the fields on-screen.



5. If you are setting up your home network for the first time, you can assign a name and password for your Wi-Fi network.

